

Sergei Rachmaninoff  
Symphony No. 1 in D Minor, Op. 13

Fagotto I

I

Grave



Allegro ma non troppo



Più vivo



Rachmaninoff — Symphony No. 1

-2-

**Moderato**

[3] 10 *rit.* 2 *pp* 3 2 3 2 3 *rit.* 1

**Meno mosso** **Moderato**

2 *rit.* 1 *ff* *f* *mf* *dim.* *mf*

*rit.* 1 *a tempo* 2 **Allegro vivace** [4] 3 10 3 *fff* *ff*

[5] *dim.* *p* *ff* *f*

1 *ff* 1 *fff* 1 *sempre scherzando* *mf*

[6] 3 11 [7] *dim* *f* *f* *f*

**Maestoso**

3 4 [8] *fff* 3

[9]

Rachmaninoff — Symphony No. 1

- 3 -



Allegro vivace.



Lo stesso tempo



Moderato



rit Moderato

mf ff f mf

Allegro molto

dim. mf pp sf sf

3 4 Più vivo

pp

14

15

mf dim. pp

16 17

mf dim. pp cresc. ff

cresc. fff dim.

Allegro vivace

3

fff ff mf fff mf sf mf dim.

ac - ce - le - ran - do

mf mf f ff

cresc. fff

-5-

11.

Musical score for "The Song of the Lark" by Maurice Strakosky. The score is in 3/4 time, key of B-flat major, and consists of 25 measures. It includes various dynamics such as *pp*, *ff*, *ppp*, *cresc.*, *dim.*, *mf*, and *marcato*, along with fingerings and articulation marks.

Rachmaninoff — Symphony No. 1

- b -

26 11 7 8 *Meno mosso.*

pp ppp pp

f < > p f < > p 2 27 10 ff

3 p mf p

mf pp cresc. sf 3 28 18

pp cresc. p 29 16 *2<sup>a</sup> V. n. Sol.* *div.*

pp cresc. fff fff *Tempo I.* 2

2 1

1 2 1 fff marcato mf

1 p fff fff fff fff

30 1 1 3 p

Rachmaninoff — Symphony No. 1

-7-

5 5 31

*p* *pp* *fff* *fff* *fff* *fff*

1 3 32 9

*fff* *fff* *fff* *fff* *fff* *fff* *ppp*

5 33

*ppp* *pp* *cresc.* *ff* *dim.*

*pp* *cresc.* *ff* *dim.* *mf marcato*

*mf*

*mf*

35 3

*cre . . seen . . do* *fff* *fff* *mf* *fff*

16 36

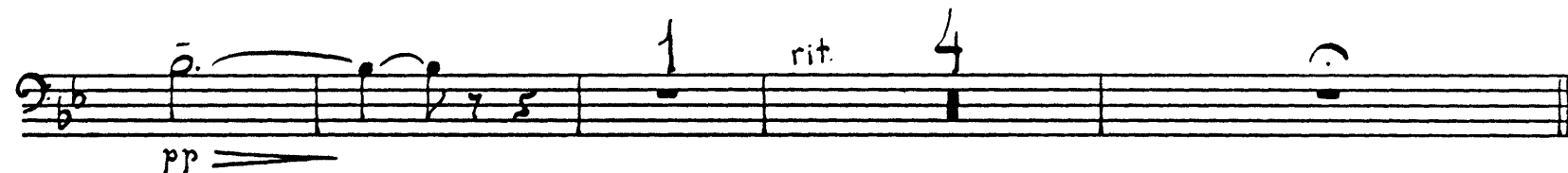
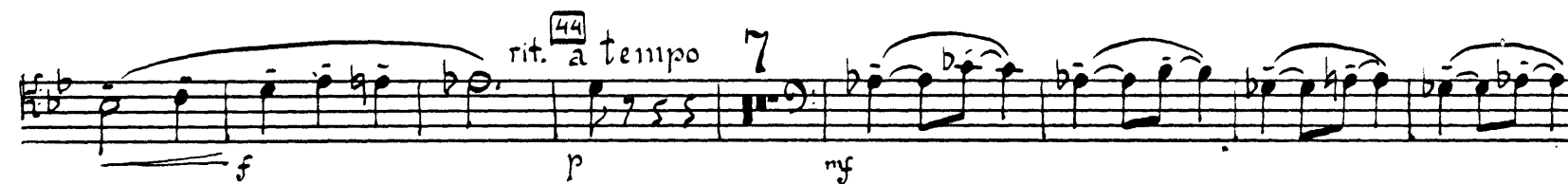
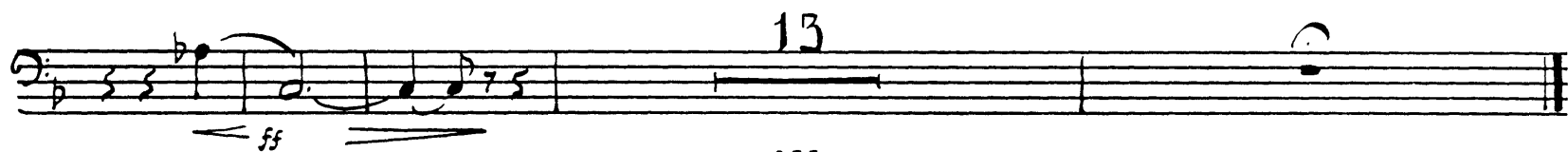
*p* *pp* *fff* *fff* *fff* *fff*

1 13 37 4

*fff* *fff* *fff* *fff* *fff* *fff* *pp* *ppp*

7 1 38 1 4

*pp* *ff*





*Allegro con fuoco*

IV

*ff* *fff*

2 Marciale (sempre marcato) 3

*fff* *fff*

46

Moto primo 47

*fff* *f*

*f* *dim.*

*p* *mf* *dim.* *p*

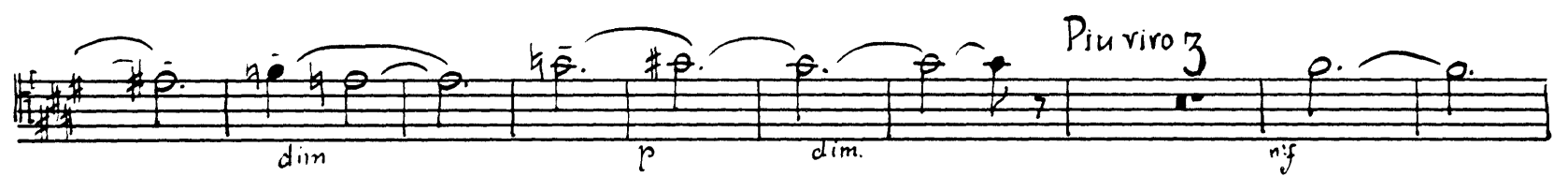
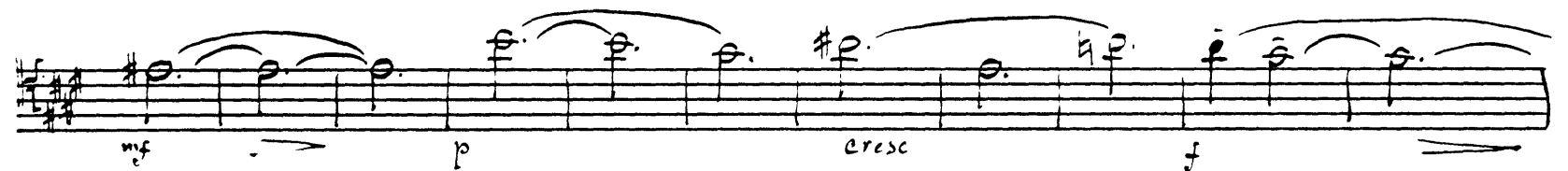
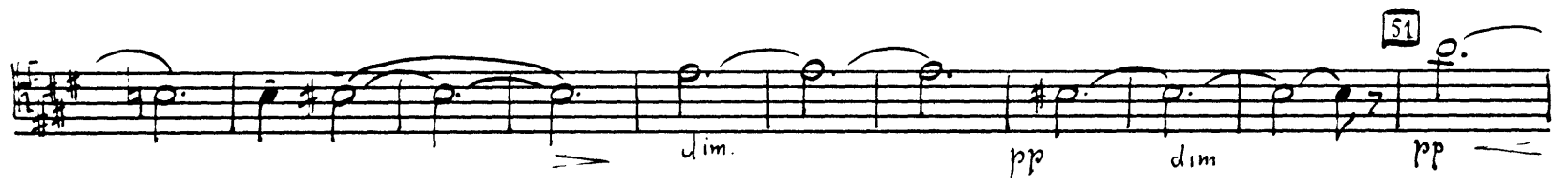
Rachmaninoff — Symphony No. 1

.10-

The musical score for Rachmaninoff's Symphony No. 1, page 10, is written in D major and 4/4 time. It consists of ten staves of music. The first two staves are for the left hand, featuring a series of eighth and sixteenth notes with accents and slurs. The third staff is for the right hand, starting with a 'Con moto' tempo marking and a '10' measure rest, followed by a 'ritardando' section and a 'Con anima' section. The fourth staff continues the right hand melody with slurs and accents. The fifth staff is for the left hand, starting with a '10' measure rest and a boxed measure number '48'. The sixth staff continues the left hand melody with slurs and accents. The seventh staff is for the right hand, starting with a '9' measure rest and a boxed measure number '49'. The eighth staff continues the right hand melody with slurs and accents. The ninth staff is for the left hand, starting with a '1' measure rest and a boxed measure number '50'. The tenth staff continues the left hand melody with slurs and accents. Dynamics include *ff*, *p*, *f*, *mf*, *dim.*, and *ritardando*. Performance instructions include 'Con moto', 'ritardando', and 'Con anima'.

Rachmaninoff — Symphony No. 1

-11-



53

pp cresc.

Meno mosso. Commodo.

54

ff mf

pp mf pp ppp

acceler. Allegro con fuoco

55

ppp ppp

ppp f f f f f f f f

55

f

f

56

f ffff f fff

f dim. p f dim.

p ffff ffff f



Largo

Musical score for the Largo section of Rachmaninoff's Symphony No. 1, measures 14-21. The score is written for a single melodic line in G major. It features a variety of dynamic markings including *mf*, *ff*, *pp*, *ritard.*, and *Grave*. The tempo is marked *Largo*. The notation includes triplets, slurs, and various rests. The key signature has one sharp (F#).

Con moto

Musical score for the Con moto section of Rachmaninoff's Symphony No. 1, measures 22-29. The score is written for a single melodic line in G major. It features a variety of dynamic markings including *fff*. The tempo is marked *Con moto*. The notation includes slurs, rests, and various note values. The key signature has one sharp (F#).